



The Center for Robust Decision Making  
on Climate and Energy Policy

---

*Climate Impacts on Economic Growth as Drivers  
of Uncertainty in the Social Cost of Carbon*

Elisabeth J. Moyer, Mark D. Woolley,  
Michael J. Glotter, David A. Weisbach

---

Working Paper No.13-02

*March, 2015*

*A final version of this working paper is published in the Journal of Legal Studies: see*  
<http://www.istor.org/stable/10.1086/678140>

*Please cite as: Elisabeth J. Moyer, Mark D. Woolley, Nathan J. Matteson, Michael J. Glotter, and David A. Weisbach. Climate Impacts on Economic Growth as Drivers of Uncertainty in the Social Cost of Carbon. *The Journal of Legal Studies*, Vol. 43, No. 2 (June 2014), pp. 401-425.*

© 2015 Elisabeth Moyer, Mark Woolley, Michael Glotter, and David Weisbach. All rights reserved. Short sections of text, not to exceed two paragraphs, may be quoted without explicit permission provided that full credit, including © notice, is given to the source.

RDCEP working papers represent un-refereed work-in-progress by researchers who are solely responsible for the content and any views expressed therein. Any comments on these papers will be welcome and should be sent to the author(s) by email.

---

## Climate impacts on economic growth as drivers of uncertainty in the social cost of carbon

E.J. Moyer · M.D. Woolley · M.J. Glotter ·  
D.A. Weisbach

Jul. 31, 2013  
Submitted to *Climatic Change*

**Abstract** One of the central ways that the costs of global warming are incorporated into U.S. law is in cost-benefit analysis of federal regulations. In 2010, to standardize analyses, an Interagency Working Group (IAWG) established a central estimate of the social cost of carbon (SCC) of \$21/tCO<sub>2</sub> drawn from three commonly-used models of climate change and the global economy. These models produced a relatively narrow distribution of SCC values, consistent with previous studies. We use one of the IAWG models, DICE, to explore which assumptions produce this apparent robustness. SCC values are constrained by a shared feature of model behavior: though climate damages become large as a fraction of economic output, they do not significantly alter economic trajectories. This persistent growth is inconsistent with the widely held belief that climate change may have strongly detrimental effects to human society. The discrepancy suggests that the models may not capture the full range of possible consequences of climate change. We examine one possibility untested by any previous study, that climate change may directly affect productivity, and find that even a modest impact of this type increases SCC estimates by many orders of magnitude. Our results imply that the SCC is far more uncertain than shown in previous modeling exercises and highly sensitive to assumptions. Understanding the societal impact of climate change requires understanding not only the magnitude of losses at any given time but also how those losses may affect future economic growth.

---

E.J. Moyer  
Dept. of the Geophysical Sciences, University of Chicago  
Tel.: +1-773-834-2992, fax: +1-773-702-9505, E-mail: [moyer@uchicago.edu](mailto:moyer@uchicago.edu)

M.D. Woolley  
Logistics Management Institute (LMI)

M.J. Glotter  
Dept. of the Geophysical Sciences, University of Chicago

D.A. Weisbach  
Law School, University of Chicago

## 1 Introduction

One of the central ways that the costs of global warming are incorporated into U.S. law is through the use of the social cost of carbon (SCC) – the present-value cost of an additional ton of CO<sub>2</sub> emissions – in cost-benefit analysis. Federal agencies are required by executive order to assess the costs and the benefits of each significant regulation. In 2009, in an effort to standardize analyses, the Office of Management and Budget (OMB) convened representatives from 12 agencies to participate in an Interagency Working Group on the social cost of carbon (IAWG). The IAWG based their study on three simple, commonly-used integrated assessment models (IAMs) that represent the effects of climate change on the global economy – DICE (Nordhaus, 2008), FUND (Anthoff et al, 2009), and PAGE (Hope, 2006) – and so provides a useful framework for examining issues in modeling the cost of climate change. The models were tuned to match the same socioeconomic scenarios and climate sensitivities, and were used to predict economic trajectories in the baseline case and with one additional ton of CO<sub>2</sub>. The SCC is computed as the present value difference in consumption between the two cases. The IAWG’s central SCC estimate (IAWG, 2010) must be used in cost-benefit analysis of any regulation that affects carbon dioxide emissions.

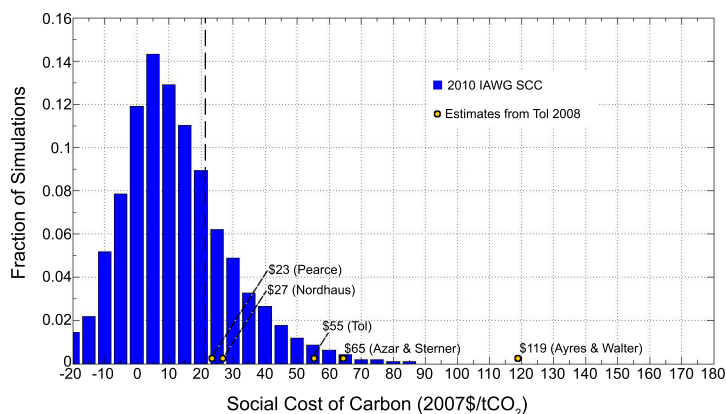


Fig. 1: Distribution of 2010 IAWG SCC estimates from all three models, for a 3% discount rate. Data were digitized from Figure A8 of IAWG (2010). (Raw SCC data are no longer available.) Dashed line is mean value across models, \$21/tCO<sub>2</sub>. Mean (median) SCC values for DICE, PAGE, and FUND are \$28 (\$25), \$30 (\$12), and \$6 (\$0.5) /tCO<sub>2</sub>, respectively (IAWG (2010) Tables A3 and A5). Negative SCC values imply that climate change is net beneficial to society; all are confined to FUND, which assumes gains in the agricultural sector under moderate warming (Greenstone et al, 2013). Dots show all SCC estimates from the Tol (2008) review with 3% discount rate, as average values from each study.

The IAWG's distribution of SCC values is relatively narrow and consistent with previous estimates. The distribution with an OMB-required fixed 3% discount rate is right-skewed with a median of  $\sim \$12/\text{tCO}_2$ , a mean of  $\$21/\text{tCO}_2$ , and a 95th percentile value of  $\$68/\text{tCO}_2$  (Fig. 1). A 2008 meta-analysis of SCC estimates showed a similar right-skewed distribution, with values from peer-reviewed studies using a 3% discount rate ranging from  $\$23\text{-}119/\text{tCO}_2$  (Tol, 2008). Several studies since 2010 have revisited the IAWG estimates and generally suggested modest increases (e.g. Johnson and Hope, 2012; Kopp et al, 2012). In 2013, the IAWG used updated model versions to provide a revised SCC distribution about 50% higher (IAWG (2013), and see Appendix A for details). Even inclusive of these later studies, the range of SCC values is narrow enough to appear inconsistent with the widely held view that the societal consequences of climate change over hundreds of years are highly uncertain.

The IAWG models share one notable feature: although climate damages can become large as a fraction of output, they do not significantly alter economic trajectories. As an example, we present model output generated with a single IAM, scenario, and climate sensitivity (the DICE model, IMAGE scenario, and  $3^\circ\text{C}/\text{CO}_2$  doubling, all discussed further in Section 2). The IMAGE scenario posits that without climate change, the global economy would grow at an average annual rate of 1.3% (1.2% per capita), yielding per capita income 35 times larger by 2300 (Fig. 2).<sup>1</sup> This strong growth continues even under basecase  $\text{CO}_2$  emissions and climate change. Although global mean temperature rises over  $6^\circ\text{C}$  by 2300, accumulation of wealth is only slightly reduced: per capita income rises by a factor of 30 rather than 35. The persistence of growth in the face of climate change in DICE and similar models has been noted by other authors, in particular Weitzman (2011).

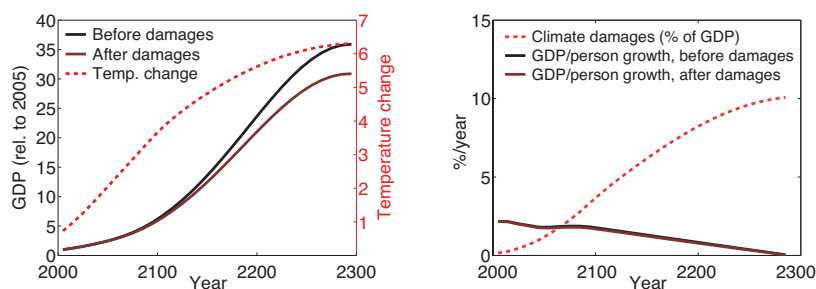


Fig. 2: Evolution of per capita GDP (left) and per capita annual GDP growth (right) from IAWG DICE-IMAGE, without (black) and with (brown) climate change damages. Left panel includes projected global mean temperature change (red). Right panel includes annual GDP losses due to climate damages (red).

Persistent growth leads to SCC values likely too low to justify significant action to mitigate climate change. Spending to benefit much wealthier future generations

<sup>1</sup> In the economic scenarios used by the IAWG, average annual growth rates to 2300 range from 1-1.3% (0.8-1.3% per capita), producing gains in per capita income of 4-6 times by 2100 and 12-40 times by 2300.

would need an extraordinary high return to be warranted. In the IMAGE example, with 30x growth by 2300 despite climate change, recommending immediate mitigation spending would be analogous to asking the average current United States household, with an annual family income of \$50,000, to transfer wealth to a family with an income of \$1.5 million. Comparison to mitigation costs is also informative. The central SCC estimate of \$21/tCO<sub>2</sub> would not likely yield significant transformation of the electric sector, even if it were taken as a recommended carbon tax, since the 2010 minimum U.S. “price premium” for renewable electricity generation is ~\$22/tCO<sub>2</sub> (Johnson and Moyer, 2012).<sup>2</sup> (See Section 5 for discussion of optimal taxes). The IAWG process appears to produce a policy recommendation that would not significantly drive technological evolution for emissions reductions.

Continued economic growth in the face of climate change is inconsistent with many (admittedly qualitative) statements by experts that climate change may have strongly detrimental effects to human society. This discrepancy suggests that the models used in the IAWG process may not capture the full range of possible consequences of climate change, i.e. that some aspect of parameter space remains unsampled. In this study, we explore which aspects of the IAWG process produce the apparent robustness in SCC estimates. In particular, we examine one possibility unexplored by any study, that climate change may directly affect the productivity of the economy.<sup>3</sup>

## 2 DICE and the Interagency SCC Estimation

We focus on one of the three models used in the IAWG process, DICE (Dynamic Integrated Climate-Economy). DICE is an open-source IAM with a long history of use in studies of the costs of global warming (Nordhaus, 1993, 1994, 2007, 2008). Our analysis uses the model version modified by the IAWG (“interagency DICE”), which was based on the 2007 release (“standard DICE”). We examine only DICE because, of the three IAWG models, it is the only general equilibrium model and therefore the only one capable of capturing the potential growth impact of climate change that is the focus of this study. (FUND and PAGE are both partial equilibrium models in which economic growth is exogenously specified.) DICE is also open source, widely-known, and based on standard economic theory. For simplicity, we consider only a single representative socioeconomic trajectory (from IMAGE) and climate sensitivity (3°C/CO<sub>2</sub> doubling, the median value in the distribution used in the IAWG study), but the underlying arguments apply generally.

DICE is based on the Solow-Swan growth model (Solow, 1956; Swan, 1956). It treats the entire world as a single region, with output generated by labor and capital

<sup>2</sup> \$22/tCO<sub>2</sub> is the premium commercial windpower in high-wind onshore sites. Commercial dam-based hydropower is lower-cost.

<sup>3</sup> Fankhauser and Tol (2005) consider the possibility that climate change may have an *indirect* effect on productivity and hence growth. In their model, productivity growth is endogenous and is a function of the labor and capital devoted to R&D. Climate change reduces usable output as in DICE, in turn reducing savings and the capital available to the R&D sector, slowing growth.

combined at a prescribed rate of productivity. Economic output is represented by a standard Cobb-Douglas production function:

$$Y_t = A_t \cdot N_t^{1-\alpha} K_t^\alpha \quad (1)$$

where  $Y_t$  is total output,  $K_t$  is capital,  $N_t$  is labor, and  $A_t$  is Total Factor Productivity, “TFP”. TFP is intended to capture all changes to output that cannot be explained by changes in labor or capital, and is often envisioned as varying because of technological change. The parameter  $\alpha$  (the elasticity of output with respect to capital) is set in DICE to 0.3, reflecting broadly accepted estimates for the share of income going to capital (Acemoglu, 2008). Output per capita,  $Y/N$ , is then a function only of productivity and capital stock per capita:

$$\frac{Y_t}{N_t} = A_t \cdot (K_t/N_t)^\alpha. \quad (2)$$

Capital grows through savings and depreciates at an annual rate  $\delta$ , i.e. capital in one time period is equal to depreciated capital in the previous period plus savings:

$$K_{t+1} = K_t(1 - \delta) + sY_t. \quad (3)$$

The savings rate  $s$  is fixed at 22% and  $\delta$  at 10%.

CO<sub>2</sub> emissions follow a fixed path in interagency DICE, in contrast to standard DICE in which emissions *intensity* (CO<sub>2</sub> per economic activity) is exogenous. Emissions are translated to atmospheric CO<sub>2</sub> concentration through a simple 3-box model of the ocean and atmosphere and a linearized representation of ocean CO<sub>2</sub> uptake. (See for longer discussion of the DICE carbon cycle). Temperature evolution is determined by the specified climate sensitivity and a simple representation of heat transfer in the ocean.

The climate-economy feedback loop is closed by allowing temperature change to affect the economy. Damages from climate change are modeled as a fractional loss  $D$  of annual economic output that is a function of global mean temperature. Equation 1 becomes:

$$Y_t = (1 - D_t) \cdot A_t \cdot N_t^{1-\alpha} K_t^\alpha. \quad (4)$$

The fractional loss of output  $D$  due to climate damages ranges from 0 (no loss) to 1 (loss of all output):

$$D_t = 1 - \frac{1}{1 + a_2 \Delta T_t^2}. \quad (5)$$

where  $\Delta T_t$  is the global mean temperature change at time  $t$ . The damage parameter  $a_2$  is set based on two assumptions: no change in output at 0 °C temperature change and a 1.8% loss of GDP at a “calibration point” of  $\Delta T = 2.5$  °C, yielding  $a_2 = .0028388$  (Nordhaus, 2007, 2008). The loss estimate of 1.8% is drawn from a meta-analysis of published climate impacts studies (Nordhaus, 2007, 2008; Nordhaus and Boyer, 2000).

Because the IAWG protocol required that the three IAMs be run with common scenarios, the IAWG modified DICE, fixing parameters that would ordinarily vary

and tuning the model to match specified scenarios of economic output and emissions (2000-2100 forecasts presented at the 2009 Stanford Energy Modeling Forum Exercise 22; see Clarke and Weyant (2009)). Tuning involved constructing exogenous productivity (TFP) curves to reproduce the prescribed economic evolution. To extend scenarios an additional two hundred years to 2300, the IAWG assumed that population and GDP growth rates decline linearly from 2100 forward, reaching zero in 2200 and 2300, respectively. The resulting assumptions for the IMAGE scenario are shown in Figure 3.

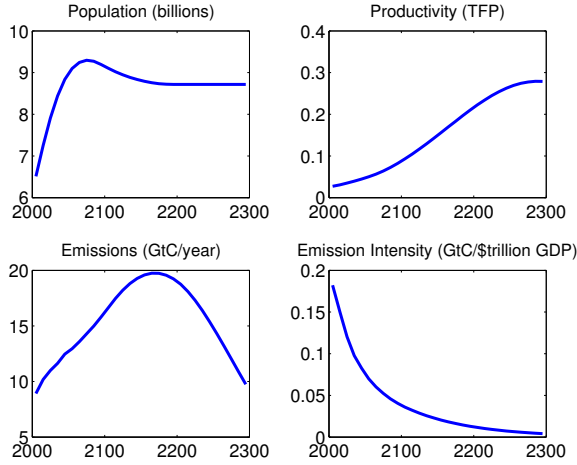


Fig. 3: Three exogenous parameters – population, TFP, and annual CO<sub>2</sub> emissions – and implied carbon emission intensity for the IMAGE scenario. Productivity increases by a factor of 10 between 2000-2300, and emissions intensity falls by a factor of 44. Cumulative emissions during this timeframe are  $\sim 4,600$  GtC.

To generate pathways of SCC values over time, each model was run with a base-case emissions scenario and sequentially with an additional ton of CO<sub>2</sub> emissions in each scenario year. The SCC in year  $\tau$  is the net present value of the difference between consumption (output less savings)  $C_b$  in the base case and  $C_1$  in the case with additional emissions in year  $\tau$ :

$$SCC_{\tau} = \sum_{t=\tau}^T \frac{(C_b - C_1)_t}{(1+r)^t} \quad (6)$$

where  $r$  is the discount rate. Because climate damages are assumed nonlinear with global mean temperature, the SCC rises over time, approximately doubling between 2000 and 2050: damages from an additional ton of CO<sub>2</sub> are larger when previous warming is larger. The IAWG used a fixed discount rate of 3%, required by OMB guidelines, but also reported results for discount rates of 2.5% and 5%. The 2010 SCC



value derived in our single-scenario, single-climate-sensitivity analysis is similar to the value obtained by the IAWG with DICE using a distribution over scenarios and parameters: \$34/tCO<sub>2</sub> vs. \$28/tCO<sub>2</sub> in IAWG (2010).<sup>4</sup>

### 3 Robustness of growth in DICE and alternative specifications of climate damages

In interagency DICE, economic growth continues despite substantial climate damages because past damages minimally affect economic trajectories. As shown in Figure 2, economic growth remains positive in the year 2300 even when global mean temperature rise exceeds 6°C and the annual loss of output is over 10% of GDP. Societal income at this point would have been 35x present without climate change and is 30x present with it, but the bulk of that difference is the 10% annual climate-related loss of output, which alone would lower income to 31.5x present. The cumulative effects of two previous centuries of changed climate make a negligible contribution.

Annual climate losses in DICE are comparable to historical major economic shocks, but the lack of cumulative effects may not be realistic. The Tohoku earthquake in March 2011 is estimated to have cost Japan 3.3%-5.2% of GDP in reconstruction costs (OECD, 2011), and economic contraction in the U.S. during the Great Depression was 8.6%, 6.5% and 13.1% in the years 1929-30, 1930-31 and 1931-32, respectively (BEA, 2011). During the Great Depression, economic contractions were progressive, with each year's loss evaluated against that of the previous year, so that by 1931-32, output was more than 25% lower than in 1928-29. In DICE, by contrast, climate damages in a given year propagate only weakly into the future.

Weak propagation of climate damages in DICE occurs because damages are applied only to output, and can affect growth only indirectly, through two pathways. First, the growth rate  $dY/dt$  includes a small term  $(dD/(1-D))/dt$  related to year-over-year fractional changes in the damages themselves, which increase as warming progresses. Second, climate damages lower savings, because savings are a fixed percentage of output. Harm from climate change reduces capital available in future years, lowering output in those years. Neither effect is large, however.

We test the robustness of growth in DICE by increasing the magnitude of climate damages to highly unlikely values, setting losses at the 2.5°C calibration point to 15% and 30% of GDP rather than the default 1.8% (Fig. 4a-b). The most extreme value used is over six times the maximum of the IPCC's estimated plausible range of damages (Pachauri, 2007) and yields annual climate-related losses of over 70% of GDP by 2300. Even these catastrophic losses do not cause economic contraction. The assumed exogenous factors driving growth in DICE outweigh any plausible effects of climate change.

The robustness of growth in DICE suggests that the specification of climate damages may not reflect the full range of possible harms. The model has only four parameters that can be affected by climate change: output  $Y$ , capital  $K$ , labor  $N$ , and productivity  $A$ . In DICE, damages affect only output. Several previous authors have

<sup>4</sup> Interagency DICE uses 10-year timesteps beginning with 2005, so our stated 2010 SCC value is the average of 2005 and 2015. The IAWG "central" value of \$21/tCO<sub>2</sub> averages estimates from all models.

tested alternative representations of climate damages, including applying them to capital (e.g. Ackerman et al, 2010; Kopp et al, 2012), but all yield economies that grow in the face of large climate damages. We consider the possibility that climate change may reduce productivity growth. While the literature on climate change and technology includes many studies that consider how endogenously represented technological changes may affect climate (e.g. by promoting the development of low-emission energy sources; for examples see Acemoglu et al, 2012; Gillingham et al, 2008; Popp, 2004), no studies have considered the inverse problem, how climate change may directly affect productivity.

Research suggests that TFP levels can be partially explained by human capital accumulation, by the quality of government services, and by investment in R&D, all of which may be affected by climate change. (See reviews in Acemoglu, 2008; Barro and Sala-i-Martin, 2003). Some authors have argued that permanent losses of ecosystems and the use of capital and labor on adaptation instead of R&D may directly reduce growth rates (e.g. Pindyck, 2011, 2012). In a world where climate change causes losses to output, people may also reduce investments in areas that would have led to greater future output (e.g. education, health care, or public goods), yielding future productivity lower than in a world with no climate change. This indirect effect is analogous to the compounding impact of output losses to the capital stock. (See also Fankhauser and Tol, 2005). DICE cannot capture this effect because it does not allow savings to affect TFP, which is entirely exogenous.

The empirical evidence on the impact of climate change on productivity is limited but suggestive. Although temporary weather shocks are not exactly analogous to long-term climate changes, they can inform modeling of climate-related damages. Dell et al (2012) find that temperature shocks lead to several years of lower economic growth in low-income countries, affecting agricultural yields, industrial output, and political institutions, and reducing growth rates temporarily by  $\sim 1.3$  percentage points per  $^{\circ}\text{C}$  temperature rise. Bansal and Ochoa (2011) find that national temperature shocks reduce growth by 0.9 percentage points per  $^{\circ}\text{C}$ . Jones and Olken (2010) concur in finding reduced growth in agricultural and light manufacturing exports from poor countries after temperature increases. Of course, for longer-term climate changes, adaptation should result in smaller adverse impacts than those observed after short-term weather events. Still, Dell et al (2009) suggest that only half of the negative short-term impacts of temperature shocks are offset in the long run through adaptation.

In this work, we do not try to estimate how damages from climate change will affect TFP, if at all. Instead, we explore the sensitivity of the SCC estimate to the implicit assumption in DICE that damages do *not* affect TFP. To demonstrate the possible size of the effects, we examine the consequences of two formulations. First, we consider a damage function that imposes a fraction of annual damages on productivity (and the rest on output) but keeps the year-on-year damages for any given change in temperature the same as in the DICE formulation. Climate damages therefore reduce the level of TFP in any given year. Second, we consider a damage function motivated by a well-known endogenous growth model in which TFP growth is determined by the allocation of labor to inventing or manufacturing (Romer, 1990). Climate damages therefore reduce the *growth rate* of TFP. In both cases, climate ef-

fects on growth are negative. We do not consider the possibilities suggested by some authors, that investment in R&D could drive growth that counteract climate damages (Miao and Popp, 2013) or that natural disasters stimulate innovations and actually produce net growth (Skidmore and Toya, 2002). We explore only that part of the uncertainty in SCC values associated with the plausible possibility that climate change may negatively impact TFP.

### 3.1 Damages to TFP levels

In our first formulation, we allow a fraction of damages to reduce productivity rather than output. We solve for the implicit growth rate of TFP ( $g_{At}$ ) in the exogenously specified path  $A_t$  according to

$$A_{t+1} = (1 + g_{At}) \cdot A_t. \quad (7)$$

We then allow a fraction  $f$  of damages to reduce TFP instead of decreasing output. That is, we specify a new path of TFP,  $A_t^*$ , that is reduced by climate damages:

$$A_{t+1}^* = (1 - f \cdot D_t)(1 + g_{At}) \cdot A_t^* \quad (8)$$

where  $A_0^* = A_0$ . The remainder of damages fall on output. Setting  $D_{ty} = 1 - \frac{(1-D_t)}{(1-f \cdot D_t)}$ , output equals

$$Y_t = (1 - D_{ty}) \cdot A_t^* \cdot N_t^{1-\alpha} K_t^\alpha.$$

This modification yields the same single-period fractional loss in consumption ( $1 - D_t$ ) as in the original specification. The trajectory of economic output is however highly sensitive to assumptions. Applying even a small fraction  $f$  of damages to TFP eventually produces negative growth rates, and applying 25% of damages to TFP causes economic collapse within the analysis timeframe (Fig. 4b-c).

### 3.2 Damages to TFP growth rates

As a second possibility, we consider a formulation of damages motivated by Romer (1990). That model contains two sectors, an inventing sector and a manufacturing sector; output of the former increases productivity of the latter. We allow damages to apply to both sectors equally. Damages then affect the economy in two ways: they reduce output of the manufacturing sector the same way they do in DICE – Equation 4 still holds – and they reduce output from the inventing sector, which reduces the growth rate of TFP according to

$$A_{t+1}^* = (1 + g_{At}(1 - D_t)) \cdot A_t^*. \quad (9)$$

This damage function is almost the same as that used by Pindyck (2011, 2012). (See Appendix B for derivation.) With this formulation, the DICE climate damages significantly reduce economic growth (Fig. 4b-c, dashed line). During the 300-year time period of our analysis, the effect is roughly similar to applying  $f = 5\%$  of damages

to TFP in Equation 8. Note that with the formulation of Equation 9, as opposed to that of Equation 8, *growth* in TFP can vanish but the TFP level cannot shrink, meaning climate change cannot produce a severe economic contraction. Equation 9 may therefore not capture all potential behavior of the climate and economic system. Nevertheless, it is informative that climate impacts on TFP can be a natural consequence of standard economic models.

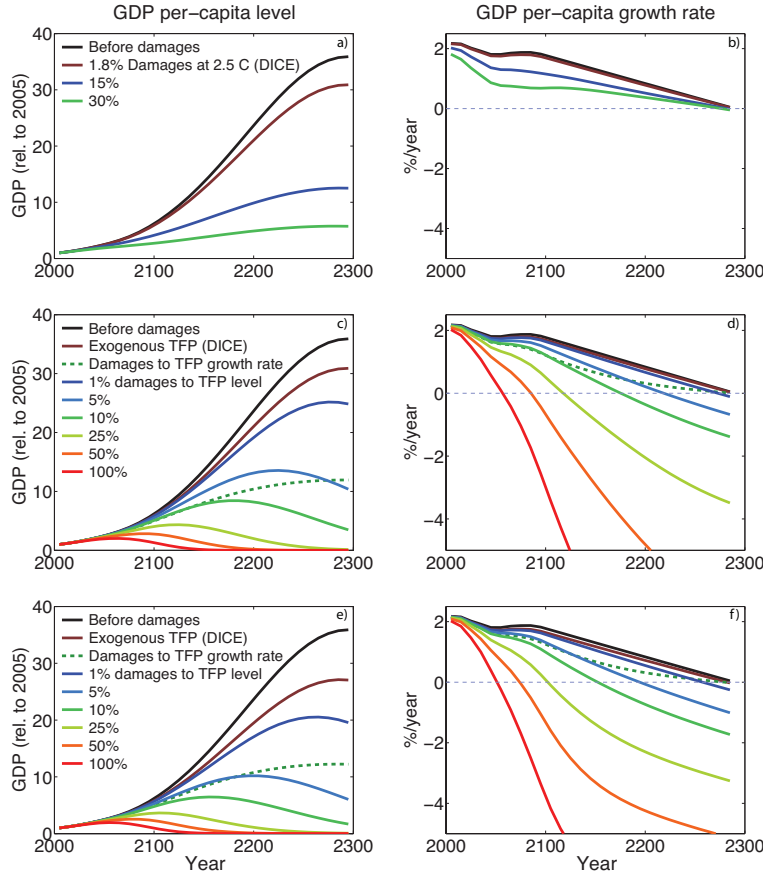


Fig. 4: Per capita economic output (left) and growth rates (right) in interagency DICE-IMAGE with a variety of climate damages representations. The no-climate-change case is repeated in black. (a-b): varying damages magnitude at 2.5°C calibration point. Default IAWG value of 1.8% in brown. (c-d): damages applied to the TFP level and TFP growth rate. (e-f): repeat of c-d with modified model (endogenous emissions and improved carbon cycle). Model modifications produce slightly lower economic output in all but catastrophic cases, where reduced CO<sub>2</sub> emissions moderate climate change and reduce losses instead.

### 3.3 Model adjustments required if climate change reduces growth

The assumption that climate change does not reduce growth is so ingrained in interagency DICE that the model contains three features that become unrealistic if growth is significantly reduced by climate damages. First, a fixed emissions pathway means that if the economy declines, emissions intensity ( $\text{CO}_2/\text{GDP}$ ) can increase to implausible values. Second, a fixed discount rate is inconsistent with theories of the proper discount rate, which should be sensitive to economic growth. Finally, the DICE carbon cycle model is valid only on short (decadal) timescales and removes atmospheric  $\text{CO}_2$  too quickly thereafter. If the discount rate is low because of low growth rates, longer timescales matter. The first of these features would tend to increase SCC values; the second two to decrease them. We therefore adjust the model to correct these unrealistic assumptions and recalculate economic trajectories (Fig. 4e-f, which repeat the cases shown in Fig. 4c-d). (For detailed discussion, see Appendices C and D.) Economic evolution remains broadly similar in the modified model, since reduced  $\text{CO}_2$  emissions under economic decline are offset by slower ocean uptake of  $\text{CO}_2$ . Different damage formulations still produce a wide range of economic outcomes.

## 4 Comparison of SCC estimates

The varying economic outcomes with different treatments of climate damages produce SCC values that span many orders of magnitude (Table 1 and Fig. 5). Because the SCC is also sensitive to the choice of discount rate, a controversial issue, we show SCC calculated with two choices of discount rate parameters: values consistent with the discussion in IAWG (2010), and values used in Stern report (Stern, 2007) (Parameters are  $\eta = 2$ ,  $\rho = 1.5\%/yr$  and  $\eta = 1$ ,  $\rho = 0.1\%/yr$ , respectively, in the Ramsey equation  $r_t = \eta \cdot g_t + \rho$ , where  $g_t$  is the growth rate. See Appendix E for discussion.) For either discounting case, the resulting range of SCC values is much larger than in previous studies (e.g. Johnson and Hope, 2012; Kopp et al, 2012; Tol, 2008). As we have retained the same functional form for the magnitude of climate damages, this range reflects only uncertainty about how damages affect growth. Other authors have discussed alternate functional forms for damages (e.g. Ackerman et al, 2010; Kopp et al, 2012; Weitzman, 2009, 2011). Including those changes would increase the range of SCC values still further.

The results of this exercise suggest that uncertainty in SCC values due to treatment of damages is comparable to that due to treatment of discounting. SCC values rise approximately exponentially with fraction of damages to TFP. The rate of rise depends on  $\eta$ , with higher  $\eta$  producing greater sensitivity to damage assumptions: when damages are low and growth rates positive, harms to future generations are weighted less; when the economy contracts, harms to future generations are weighted more (Fig. 5). In all cases with damages to TFP levels, growth rates become negative and either produce negative discount rates or would do so if the analysis timeframe were extended. Once the discount rate is negative, the present value of future damages grows exponentially with the time until damages occur. The exact SCC value is therefore an artifact of the time horizon of the analysis and would increase with the

Damages treatment	2010 SCC Value (\$2007/tCO <sub>2</sub> )		
	<i>IAWG model fixed discounting</i>	<i>Modified model <math>\eta = 2, \rho = 1\%</math></i>	<i>Modified model <math>\eta = 1, \rho = 0.1\%</math></i>
DICE damages	34	16	210
1% damages to TFP level	51	22	440
5% damages to TFP level	110	54	1,300
Damages to TFP growth rate	160	72	1,500
10% damages to TFP level	160	130	2,200
25% damages to TFP level	250	1,600	4,800
50% damages to TFP level	320	100,000	8,000

Table 1: Selected 2010 SCC estimates from unmodified and modified interagency DICE-IMAGE (climate sensitivity 3°C/CO<sub>2</sub> doubling), under different formulations of climate damages and assumptions about discounting. Discounting with  $\eta = 2$ ,  $\rho = 1\%/yr$  produces greater sensitivity to damage treatment. With DICE damages, SCC is lower than in the fixed-discounting case because the endogenous discount rate is initially larger than 3%. Cases with damages to TFP eventually produce negative discount rates, so SCC estimates would grow if analysis were extended past 2300.

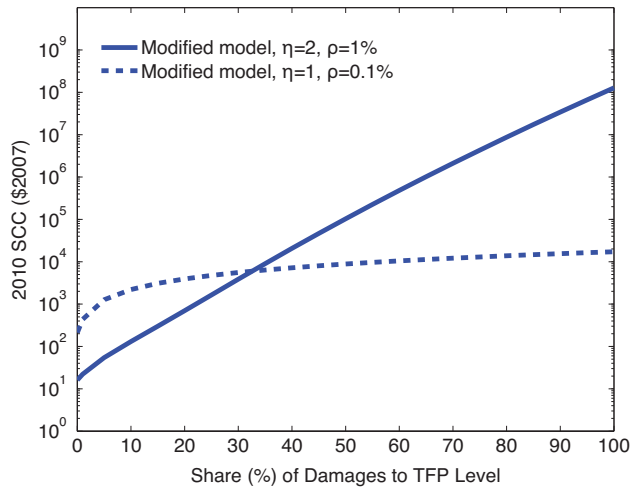


Fig. 5: The 2010 SCC from modified DICE under varying assumptions regarding damages to productivity, for two alternate specifications of discount rate:  $\eta = 2$  and  $\rho = 1\%$  (solid) and  $\eta = 1, \rho = 0.1\%$  (dashed). The SCC rises exponentially with greater climate impacts to the determinants of growth. Higher  $\eta$  produces higher SCC values in simulations dominated by negative growth rates, because future harms are weighted more.

length of time considered. The SCC values we show are several orders of magnitude higher than IAWG estimates, but even so are limited by termination of the analysis in

2300. Very high SCC values indicate large potential harms from climate change, but are difficult to interpret quantitatively.

The extreme cases of climate-related damages that we explore may not be realistic, as neither standard nor interagency DICE contains the flexibility to represent behavior in circumstances of economic contraction. Adjustments to savings rates do not alter the qualitative results, but our simple damage formulation may not realistically capture economic consequences given adaptive actions. The work here is simply an exploration of uncertainty across possible parameter values in the simple IAM frameworks commonly used. The importance of growth effects means that more realistic representations are needed.

## 5 Discussion and Conclusions

Our results imply that the SCC is far more uncertain than shown in the IAWG report or in previous modeling exercises, and that narrow distributions appear to be an artifact of model assumptions. Prior models do not allow the SCC to affect growth (except indirectly) and the SCC is sensitive to this restriction. While we take no view on whether climate change will affect growth, it is not likely that these effects can be ruled out a priori, and they should not be precluded by choices made in the structure of the model. If climate change reduces TFP levels or growth rate, the direction of the changes in the SCC value are uniformly upward. It is therefore possible that the SCC was underestimated by the IAWG and by previous studies.

In the model studied here, even a modest impact of climate damages on productivity can cause the SCC to grow so large as to limit its usefulness as a guide to policymaking. The SCC is evaluated under business-as-usual assumptions, which assume no policy-driven mitigation. Incremental damages will be maximal in this case, because incremental losses grow with the degree of climate change. A large SCC value signifies large potential gains from mitigation, but if current mitigation is far from optimal, the SCC would exceed the value of a carbon tax in the context of a comprehensive policy. The optimal carbon tax is set instead to that point where the marginal mitigation costs are equal to the marginal benefits of reduced harms from climate change.<sup>5</sup> In the case of very high SCC values, formulating regulatory policy based on the SCC rather than the optimal tax would impose undue costs. (No sensible policymaker, for example, would apply an SCC value of \$100,000/tCO<sub>2</sub> in cost-benefit analysis if all emissions could be eliminated for \$100/tCO<sub>2</sub>.)

Understanding how interactions between climate change and economic growth produce uncertainty in the SCC provides insight into past controversies over the appropriate choice of discount rate. Proponents of an “empirical” discount rate argue for use of values similar to observed market rates while proponents of an “ethical” discount rate argue for lower values to place greater weight on the welfare of future generations. Our results suggest that the roots of the dispute may lie not in the principles of discounting but in differing implicit assumptions about climate damages combined with counterintuitive IAM behavior. A 3% discount rate means that

<sup>5</sup> The optimal carbon tax would be estimated by an analysis in which mitigation efforts are incrementally increased until the cost of any additional mitigation no longer exceeds the resulting additional benefit.

harms after 2100 are essentially disregarded. But it is not unethical to disregard climate harms to future generations if those harms are small. The SCC values from the IAWG process are not unreasonable if the assumptions in the IAWG models are true, and future generations are many times richer despite climate change. If impacts are catastrophic instead, then standard economic analysis would indicate a low discount rate and would produce a recommendation of significant policy action. (See review in Kaplow et al, 2010). In this study, SCC values become very high if climate change reduces future wealth significantly by reducing the growth rate. It is possible that the debate over discounting results not from a difference in ethics but from an unrecognized dispute over the treatment of climate impacts.

Finally, our results suggest that the greatest uncertainty in the cost of climate change may lie not in the magnitude of losses at any given time but in how those losses affect growth. DICE damage magnitudes are broadly consistent with the estimate in the IPCC Fourth Assessment Report that a temperature change of 4°C would cause global mean losses between 1 and 5% of GDP (Pachauri, 2007). Both the physical and social science communities have shown increasing interest in studying potential climate impacts, and many current studies focus on better quantifying economic losses. Our exploration of SCC sensitivities suggests that a higher research priority should be understanding how those losses relate to growth. The importance of growth is well understood more generally; even small differences in growth rates can produce large differences in wellbeing over time. As in the rest of economics, growth effects may be the predominant factor governing the impacts of climate change.

**Acknowledgements** The authors thank the many organizers of and participants in the 2010/2011 EPA/DOE Workshops on the social cost of carbon for discussion that informed this work, and Martin Weitzman, Gilbert Metcalf, Alex Marten, Michael Canes, David Anthoff, and Nicholas Stern for helpful comments on the manuscript. Misung Ahn derived the growth rate representation based on the Romer model, and Joe Zhu digitized the 2010 and 2013 SCC estimates from IAWG reports. This research was performed as part of the Center for Robust Decision-making on Climate and Energy Policy (RDCEP) at the University of Chicago, funded by a grant from the National Science Foundation (NSF) Decision Making Under Uncertainty program (#SES-0951576). M.W. acknowledges support from the Logistics Management Institute and M.G. from an NSF Graduate Fellowship (#DGE-1144082).

## References

- Acemoglu D (2008) *Introduction to Modern Economic Growth*. Princeton University Press
- Acemoglu D, Aghion P, Bursztyn L, Hémous D (2012) The environment and directed technical change. *American Economic Review* 102(1):131–166
- Ackerman F, Stanton E, Bueno R (2010) Fat tails, exponents, extreme uncertainty: Simulating catastrophe in DICE. *Ecological Economics* 69(8):1657–1665
- Aghion P, Howitt PW (2009) *The Economics of Growth*. The MIT Press
- Anthoff D, Tol RS, Yohe GW (2009) Risk aversion, time preference, and the social cost of carbon. *Environmental Research Letters* 4
- Archer D, Eby M, Brovkin V, Ridgwell A, Cao L, Mikolajewicz U, Caldeira K, Matsumoto K, Munhoven G, Montenegro A, et al (2009) Atmospheric lifetime of fossil fuel carbon dioxide. *Annual Review of Earth and Planetary Sciences* 37:117–134



- Bansal R, Ochoa M (2011) Temperature, aggregate risk, and expected returns. NBER Working Paper 17575
- Barro RJ, Sala-i-Martin X (2003) *Economic Growth*, 2nd edn. The MIT Press
- BEA (2011) National Income and Product Analysis Table 1.1.1. [http://www.bea.gov/iTable/index\\_nipa.cfm](http://www.bea.gov/iTable/index_nipa.cfm), accessed 2012-03-19
- Bolin B, Eriksson E (1959) Distribution of matter in the sea and the atmosphere. *The Atmosphere and the Sea in Motion*
- Clarke L, Weyant J (2009) Introduction to the EMF 22 special issue on climate change control scenarios. *Energy Economics* 31:S63
- Dell M, Jones BF, Olken BA (2009) Temperature and income: Reconciling new cross-sectional and panel estimates. *American Economic Review Papers and Proceedings* 99(2):198–204
- Dell M, Jones BF, Olken BA (2012) Temperature shocks and economic growth: Evidence from the last half century. *American Economic Journal: Macroeconomics* 4(3):66–95
- Fankhauser S, Tol RSJ (2005) On climate change and economic growth. *Resource and Energy Economics* 27(1):1–17
- Gillingham K, Newell RG, Pizer WA (2008) Modeling endogenous technical change for climate policy analysis. *Energy Economics* 30(6):2734–2753
- Glotter M, Pierrehumbert R, Elliott J, Moyer E (2013) A simple carbon cycle representation for economic and policy analyses. In preparation
- Greenstone M, Kopits E, Wolverton A (2013) Developing a Social Cost of Carbon for U.S. regulatory analysis: A methodology and interpretation. *Review of Environmental Economics and Policy* 7(1):23–46
- Hope C (2006) The marginal impact of CO<sub>2</sub> from PAGE2002: An integrated assessment model incorporating the IPCC's five reasons for concern. *The Integrated Assessment Journal* 6(1):19–56
- IAWG (2010) Technical support document: Social Cost of Carbon for regulatory impact analysis under executive order 12866
- IAWG (2013) Technical support document: Technical update of the Social Cost of Carbon for regulatory impact analysis under executive order 12866
- Johnson LT, Hope C (2012) The Social Cost of Carbon in U.S. regulatory impact analyses: An introduction and critique. *Journal of Environmental Studies and Sciences*
- Johnson SD, Moyer EJ (2012) Feasibility of U.S. renewable portfolio standards under cost caps and case study for Illinois. *Energy Policy* 49:499–514
- Jones BF, Olken BA (2010) Climate shocks and exports. *American Economic Review Papers and Proceedings* 100(2):454–459
- Jones CI (1995) R&D-based models of economic growth. *Journal of Political Economics* 103:759–784
- Kaplow L, Moyer E, Weisbach D (2010) The social evaluation of intergenerational policies and its application to integrated assessment models of climate change. *The BE Journal of Economic Analysis & Policy* 10(2)
- Kopp R, Golub A, Keohane N, Onda C (2012) The influence of the specification of climate change damages on the Social Cost of Carbon. *Economics: The Open-Access, Open-Assessment E-Journal* 6(2012-13)

- Miao Q, Popp D (2013) Necessity as the mother of invention: Innovative responses to natural disasters. NBER Working Paper No 19223
- Nordhaus WD (1993) Rolling the 'DICE': an optimal transition path for controlling greenhouse gases. *Resource and Energy Economics* 15(1):27–50
- Nordhaus WD (1994) *Managing the Global Commons: The Economics of Climate Change*. MIT Press, Cambridge, Massachusetts, USA
- Nordhaus WD (2007) Accompanying notes and documentation on development of DICE-2007 model: Notes on DICE-2007.delta.v8 as of June 7, 2007. Yale University
- Nordhaus WD (2008) *A Question of Balance: Weighing the Options on Global Warming Policies*. Yale University Press
- Nordhaus WD, Boyer J (2000) *Warming the World: Economic Models of Global Warming*. MIT Press, Cambridge, Massachusetts, USA
- OECD (2011) Japan's economic outlook following the 11 March 2011 earthquake. <http://www.oecd.org/japan/japanseconomicoutlookfollowingthe11march2011earthquake.htm>, accessed 2012-03-19
- Pachauri R (2007) *Climate Change 2007: Synthesis Report. Contribution of Working Groups I, II and III to the Fourth Assessment Report of the Intergovernmental Panel on Climate Change*. IPCC
- Pindyck RS (2011) Modeling the impact of warming in climate change economics. In: Libecap GD, Steckel RH (eds) *The Economics of Climate Change*, U. Chicago Press
- Pindyck RS (2012) Uncertain outcomes and climate change policy. *Journal of Environmental Economics and Management* 63(3):289–303
- Popp D (2004) ENTICE: Endogenous technical change in the DICE model of global warming. *Journal of Environmental Economics and Management* 48(1):742–768
- Revelle R, Suess HE (1957) Carbon dioxide exchange between atmosphere and ocean and the question of an increase of atmospheric CO<sub>2</sub> during the past decades. *Tellus* 9(1)
- Romer P (1990) Endogenous technological change. *Journal of Political Economy* 98(5):S71–S102
- Skidmore M, Toya H (2002) Do natural disasters promote long-run growth? *Economic Inquiry* 40(4):664–687
- Solow R (1956) A contribution to the theory of economic growth. *The Quarterly Journal of Economics* 70(1):65–94
- Stern N (2007) *The Economics of Climate Change: The Stern Review*. Cambridge University Press
- Swan TW (1956) Economic growth and capital accumulation. *Economic Record* 32(2):334–361
- Tol RS (2008) The Social Cost of Carbon: Trends, outliers and catastrophes. *Economics* 2
- Weitzman M (2009) On modeling and interpreting the economics of catastrophic climate change. *The Review of Economics and Statistics* 91(1):1–19
- Weitzman M (2011) Fat-tailed uncertainty in the economics of catastrophic climate change. *Review of Environmental Economics and Policy* 5(2):275–292

### A 2013 update to the IAWG social cost of carbon estimates

The U.S. government's Interagency Working Group on the social cost of carbon released an updated set of SCC estimates in May 2013 (IAWG (2013)). The IAWG recalculated SCC values using updated versions of all three IAMs used in the original study (DICE, FUND, and PAGE), based on new code releases by the models' original authors. The IAWG did not make any changes regarding the discount rates or method of discounting, the basecase economic scenarios (economic growth, population, and emissions), or climate sensitivity. Comparing SCC estimates between the two studies is made somewhat complicated by the fact that the SCC grows over time and the IAWG reported values for the year 2010 in the original report and for the year 2020 in the update. In the original report, SCC values grow by  $\sim 20\%$  between 2010 and 2020. The new report provides a distribution of 2020 SCC estimates in which the central and 95th percentile estimates are roughly 60% higher than the original 2010 values, implying a modest real increase in SCC values (Figure 6). The change does not qualitatively impact the conclusions and recommendations of this study. Model changes are summarized in detail, below.

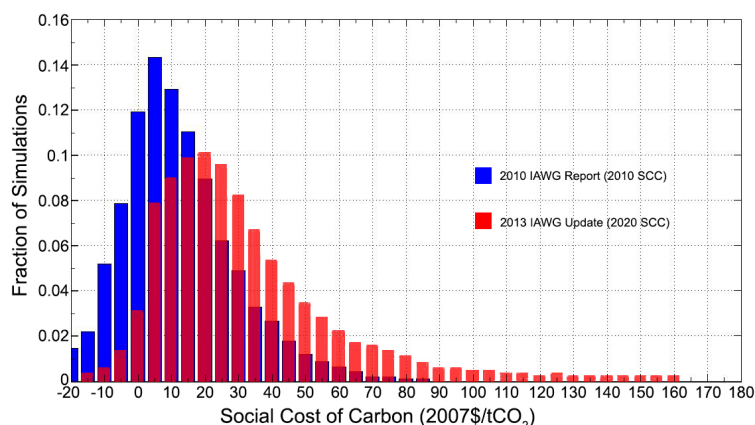


Fig. 6: Histogram of SCC estimates from the 2010 IAWG report (blue) and 2013 IAWG update (red) for the 3% discount rate case. Estimates sample across socioeconomic scenarios and climate sensitivity values. Values are digitized from Figure A8 of IAWG (2010) and from an un-numbered figure on p. 14 of IAWG (2013).

The interagency DICE model was updated to reflect changes that appeared in the 2010 standard DICE version. Changes included a damage function that represents sea level rise separately from all other damages, and adjusted values for the carbon cycle model. The carbon model in the 2010 version of DICE is based on the same set of linear equations as the 2007 version, but uses a revised set of parameters. The new parameter values were calibrated to decrease the carbon uptake by the ocean, resulting in higher atmospheric carbon concentrations. We tested the new parameter

values in the original IAWG DICE model and confirmed that they result in slightly higher carbon concentrations. However, the carbon cycle changes do not prevent the excessive long-term uptake rates discussed in Section 5.3 and Glotter et al (2013), which result from failure to incorporate nonlinear ocean chemistry.

The new DICE damage function decomposes damages into two parts: one specific to sea level rise and one representing all other damages. Both of these of the new component damage functions model economic damages as a quadratic function of temperature change, as in the 2007 version. According to IAWG (2013), the effect of the change to the damage function is to increase overall damages slightly in the short-run, decrease them in the medium-term, and increase them in the long-term. After discounting, the impact of this revision is to decrease the SCC.

The FUND model was revised to reflect new features in version 3.8. Changes include revised damage functions for sea level rise, the agricultural sector, and space heating demand; adjusted speed of temperature response to increased GHG concentrations; and addition of indirect effects of methane emissions.

The PAGE model was updated based on the 2009 model version. Changes include a separate representation of damages from sea level rise, an upper bound on the magnitude of damages, a revised method for scaling damages at the regional level, a probabilistic treatment of passing a climate threshold beyond which society suffers extreme economic damages, and revised assumptions about the rate and magnitude of adaptation to climate change.

Because the SCC is an average of the outputs of all 3 IAMs, all model changes impacted the reported SCC estimates.

## **B Romer model with climate damages to two sectors**

In standard and interagency DICE, technological change is exogenously specified, and this specification drives the growth of the economy. Under this specification, even massive damages from climate change have little effect on long term growth if they merely reduce usable output. (See main text.) We consider how climate change damages would affect long-term growth in the framework of the simplest possible model of endogenous technical change, the model developed in Romer (1990). (We closely follow the statement of the model in Aghion and Howitt (2009).) In this model, the economy is divided into two sectors. A manufacturing sector uses labor and machines (or ideas) to produce usable output under conditions of perfect competition. A research or inventing sector produces machines or ideas that contribute to the manufacturing sector. The greater the variety of machines or ideas, the more efficient the manufacturing sector, so productivity arises as a function of market activities rather than being specified exogenously. We modify the model so that damages from climate change affect both the manufacturing and research sectors and consider how these damages affect growth.

As Romer discusses, the structure of the Romer (1990) model is closely related to that of the Solow-Swan model, which is used in DICE. Nevertheless, some of the assumptions may differ so the two are not directly comparable. We use the Romer

(1990) model to motivate a damage function in DICE rather than as a formal derivation of such a function.

As a demonstration, we consider first a simple case where output is produced by the combination of labor and research in which research is a constant fraction  $\gamma$  of the economy. Research is represented by the sum of the total designs or ideas  $x$  indexed by  $i$ . This sum is combined with labor,  $L$ , and the output is reduced by harms from climate change leading to an output of:

$$y_t = (1 - D)L \int_0^t x_i di, \quad (10)$$

where damages  $D$  are as in DICE. If research is a constant fraction  $\gamma$  of the economy, we can write  $x_t = \gamma y_t$ . The change in income over time is:

$$\frac{dy_t}{dt} = (1 - D)L\gamma y_t, \quad (11)$$

and the growth rate is reduced by climate damages:

$$g_t = \frac{dy_t/dt}{y_t} = (1 - D)L\gamma. \quad (12)$$

Thus, even in a very simple model, the growth rate can be reduced by harms from climate change.

The simple model above assumes that the fraction of the economy devoted to research is fixed, but the Romer (1990) model endogenizes this choice. In a world with climate change, the research sector may grow (or shrink) in response to that change. To check that the intuitions from the simple case considered above carry over, we turn to a modification of Romer (1990) to include harms from climate change.

We use the same objective function and utility function used in DICE (restated here in continuous time for simplicity):

$$W = \int_0^\infty \frac{c_t^{1-\eta}}{1-\eta} e^{-\rho t} dt, \quad (13)$$

where  $\eta$  is the elasticity of the marginal utility of consumption and  $\rho$  is the pure rate of time preference. Given this structure of preferences, the interest rate  $r$  must follow the Euler equation:

$$g = \frac{r - \rho}{\eta}, \quad (14)$$

where  $g$  is the growth rate of GDP.

DICE assumes that there is a single economic sector that combines capital and labor at productivity rate  $A_t$  to produce a final consumption good. Following Romer, we alter this assumption so that there are two sectors to the economy, a manufacturing sector which produces a final consumption good and a research sector which produces an intermediate good used in the production of the final good. The final good is the numeraire with price 1. Production of the intermediate good uses the final good as an input (along with labor) with units set so one unit of the final good is required to produce one unit of the intermediate good.

The intermediate good can be thought of as machines, blueprints, ideas, patents, or any other input into the production of the final good. We index the intermediate inputs  $i$  in the interval  $[0, A_t]$  where  $A_t$  is the measure of the total number of intermediate good at time  $t$ .  $A_t$  is a measure of the variety of intermediate goods. A producer of an intermediate good is given a monopoly or a patent over that good but there is free entry into the research sector so expected profits are zero.

We assume that there is a fixed pool of labor divided into the final good sector ( $L_1$ ) and the research sector ( $L_2$ ). Total labor is  $L = L_1 + L_2$ . The restriction to a fixed pool of labor is not present in DICE. Although this assumption can be relaxed, following Jones (1995), for simplicity we retain the assumption here. We let damages reduce usable output as in DICE.

The production function for the final good combines labor (with share  $1 - \alpha$ ) and the intermediate sector:

$$Y_t = (1 - D)L_1^{1-\alpha} \int_0^{A_t} x_i^\alpha di. \quad (15)$$

$\alpha \in [0, 1]$ , and each  $x_i$  is the amount of intermediate product  $i$  used as input.

To see the relationship of this model to DICE, denote  $X_t$  as the total amount of the final good used to produce intermediate goods.  $X_t$  must be equal to the total intermediate output:

$$X_t = \int_0^{A_t} x_i di. \quad (16)$$

Under the assumption that an equal amount of each intermediate good  $i$  is used (shown to be true below), we can write  $x = X_t/A_t$ . Final output at time  $t$  is:

$$Y_t = (1 - D)A_t L_1^{1-\alpha} x^\alpha, \quad (17)$$

which closely resembles the production function in DICE except that the intermediate goods  $x$  function as the capital input.

GDP at time  $t$  is the output less the amount used to produce the intermediate good:

$$GDP_t = A_t [(1 - D)L_1^{1-\alpha} x^\alpha - x]. \quad (18)$$

The resulting growth rate along the balanced growth path is:

$$g = \frac{1}{A_t} \frac{dA_t}{dt}. \quad (19)$$

Our goal is to understand how damages from climate change reduce the growth rate of  $A_t$ , which is equivalent to understanding how they affect  $g$ . To do this, we write  $g$  in terms of the primitives of the model.

Start by solving for the production of the intermediate good. A producer of an intermediate good will maximize profits:

$$\Pi_i = p_i x_i - x_i, \quad (20)$$

where  $p_i$  is the price of the intermediate good  $i$  and recalling that the final good is used as an input to production of the intermediate good but that the price of a final good is equal to the price of one intermediate good. That is revenue is price times quantity and cost is equal to output given the one-for-one technology. The price  $p_i$  will be equal to the marginal product of the good in the final sector.

$$p_i = \frac{\partial Y_t}{\partial x_i} = (1-D)\alpha L_1^{1-\alpha} x_i^{\alpha-1}. \quad (21)$$

Substituting, we get

$$\Pi_i = (1-D)\alpha L_1^{1-\alpha} x_i^\alpha - x_i. \quad (22)$$

The monopolist researcher chooses  $x_i$  to maximize this expression. The first order condition is

$$\frac{\partial \Pi_i}{\partial x_i} = (1-D)\alpha^2 L_1^{1-\alpha} x_i^{\alpha-1} - 1 = 0. \quad (23)$$

The profit maximizing quantity therefore is

$$x_i = (1-D)^{\frac{1}{1-\alpha}} L_1 \alpha^{\frac{2}{1-\alpha}}. \quad (24)$$

It follows that the equilibrium quantity will be the same in every sector  $i$ , so we can drop the subscripts where convenient. The equilibrium profit flow is:

$$\Pi = \frac{1-\alpha}{\alpha} x. \quad (25)$$

The key modeling choice made by Romer is that the growth of the output of the research sector grows in proportion to the existing stock in that sector, creating knowledge spillovers. If there is a constant productivity in the research sector of  $\lambda$ , Romer writes  $dA_t/dt = \lambda L_2 A_t$ . The key question here is whether climate change reduces the flow of research or intermediate machines over time. We impose an assumption that climate change reduces the flow of research similarly to how it reduces usable output. That is, we assume that climate change hurts both sectors of the economy. Therefore, the stock of intermediate machines evolves according to:

$$dA_t/dt = (1-D)\lambda L_2 A_t. \quad (26)$$

Because the research sector is monopolistically competitive (there is free entry), the flow of profits must be zero. If the wage rate paid to researchers is  $w_t$  the flow of profits to the research sector is

$$\frac{\Pi}{r} (1-D)\lambda A_t L_2 - w_t L_2 = 0. \quad (27)$$

The first term is the output of the the sector,  $(1-D)\lambda A_t L_2$ , multiplied by the price of each machine or idea (the present value of profits,  $\Pi/r$ ). Solving,

$$r = (1-D)\lambda A_t \Pi / w_t. \quad (28)$$

We need to solve for the equilibrium wage rate. This will be equal to the marginal product of labor, so we get:

$$w_t = \frac{\partial Y_t}{\partial L_1} = (1-D)(1-\alpha)L_1^{-\alpha}A_t x^\alpha. \quad (29)$$

Using equation (24), we get

$$w_t = (1-D)^{\frac{1}{1-\alpha}}(1-\alpha)\alpha^{\frac{2\alpha}{1-\alpha}}A_t. \quad (30)$$

Substituting, we get an expression for the interest rate:

$$r = (1-D)\lambda L_1 \alpha. \quad (31)$$

Since

$$g = \frac{1}{A_t} \frac{dA_t}{dt} = (1-D)\lambda L_2 = (1-D)\lambda(L-L_1), \quad (32)$$

we get

$$r = \alpha [g - (1-D)\lambda L], \quad (33)$$

and substituting this expression into the Euler equation (14) we get

$$g = \frac{\alpha \lambda L(1-D) - \rho}{\alpha + \eta}. \quad (34)$$

Climate damages in this formulation reduce the growth rate. The key assumption is that they reduce the flow of output in the research sector in exactly the same way that they reduce the flow of output in the manufacturing sector. If we allow harms to the research sector to differ, the model would be identical except that equation (34) would be reduced by a different damage function  $(1-D_2)$  where  $D_2$  can be different from  $D$ . We have no views on the appropriate damage function in the research sector and impose the same damage function merely as a baseline.

The damage function used in the text is based on equation (34). Recall that we want an expression for the growth rate of  $A_t$ , but this is just  $g$  in this model. We simplify by setting  $\rho = 0$ . The growth rate of  $A_t$  is then reduced by the damages  $(1-D)$ , as we specified in the text. Moreover, output is also reduced by damages, as in equation (15).

### C Model modification: endogenous emissions

The IAWG process specified fixed emissions paths decoupled from actual economic performance. (In the IMAGE scenario, emissions increase for  $\sim 150$  years and decline thereafter, presumably driven by some assumed technological change). If the economy in a model simulation declines, however, retaining a fixed path of emissions would imply that people use more energy per unit of output, or that the energy they use is more carbon intensive. In cases of steep economic decline, assumptions of fixed emissions may reverse the sign of implied technological change and imply



an increasing rather than decreasing emissions intensity. For example, in a damages formulation where 50% of damages apply to TFP, assuming a fixed emissions path means that implied emissions intensity rises by approximately a factor of five by the year 2150 (Figure 7a). This result does not appear to be intended by the IAWG, and it appears to arise only in scenarios they did not consider. Using exogenous emissions in simulations with economic decline would lead to overstating the SCC because emissions continue their basecase evolution even if the economy contracts, leading to sustained high climate damages.

To avoid this problem, we assume a fixed trajectory of emissions *intensity* rather than emissions, deriving it from the basecase runs in the IAWG model (which has ktC/GDP dropping from a current rate of 0.18 to 0.04 in 2100). We then calculate emissions endogenously based on economic activity in a given scenario and the assumed emissions intensity. In cases where a high percentage of damages apply to TFP, the difference is significant: in the example above, adjusted carbon emissions in the year 2100 are approximately half those in the basecase emissions path.

We take no position on the plausibility of the emissions pathway itself, which implies that CO<sub>2</sub> emissions would decline steeply even in the absence of mitigation policies. As the purpose of this study is to examine only the effects of climate impacts on growth, and IAWG emissions scenarios are broadly similar, we simply take the IMAGE scenario as fixed. Uncertainty in the pathway of technological change would produce additional uncertainty in SCC values.

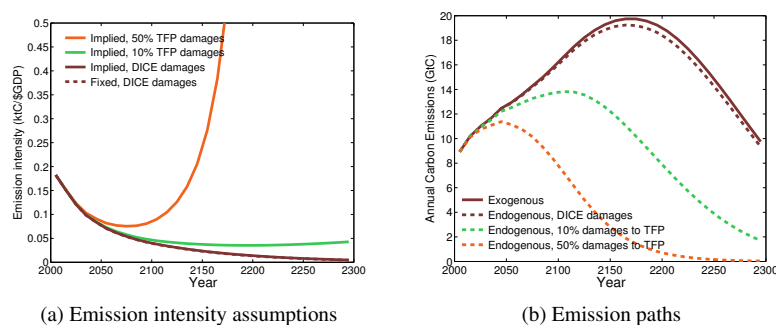


Fig. 7: Emissions intensity (left) and annual emission levels (right), under alternative modeling assumptions. Interagency DICE assumes an exogenous emission level (solid brown, right), yielding an implied emissions intensity (solid brown, left). Employing a fixed emissions path under alternative damage scenarios leads to differing implied emissions intensities (solid green and solid orange, left panel). Alternatively, we fix emissions intensity (dashed brown, left) and derive implied endogenous emissions for the various damage scenarios shown (dashed green and dashed orange, right). This formulation is consistent with the original DICE model.

## D Model modification: physical carbon cycle

IAMs that do not produce economic contraction need only a rudimentary representation of the physical climate system. Persistent growth would indicate use of a high discount rate in SCC calculations, making long-term climate changes irrelevant because long-term harms are disregarded in the analysis. If however climate losses in an IAM produce low or even negative growth rates and resulting low or negative endogenous discount rates, the modeled climate representation must remain accurate at long timescales, because the effects of climate change in the distant future matter. The carbon cycle in standard and interagency DICE approximates real-world physics only on short timescales: it provides reasonable representation for about 50 years but then deviates strongly from the predictions of state-of-the-art coupled climate models. Atmospheric CO<sub>2</sub> perturbations in DICE disappear within centuries while larger models show them persisting on the order of 10,000 years (Archer et al, 2009; Glotter et al, 2013). Adjustment of the carbon cycle parameters in the 2010 DICE update used in IAWG (2013) do not fix this fundamental issue.

Errors in CO<sub>2</sub> evolution arise in DICE because the model uses a linear representation of ocean carbon uptake. In the real world, ocean carbonate chemistry makes CO<sub>2</sub> uptake nonlinear. At present, the ocean contains over 100 times as much dissolved inorganic carbon as would be indicated by the solubility of CO<sub>2</sub> itself, primarily in the form of bicarbonate (HCO<sub>3</sub><sup>-</sup>) and to a lesser degree carbonate (CO<sub>3</sub><sup>=</sup>). As the ocean acidifies in response to CO<sub>2</sub> uptake, the partitioning shifts toward CO<sub>2</sub>, reducing the oceans' ability to store carbon and slowing uptake (Revelle and Suess, 1957). Without this nonlinear chemistry, the DICE carbon cycle produces too-rapid removal of atmospheric CO<sub>2</sub> perturbations. For the IMAGE emissions scenario, the 2007 DICE carbon cycle model yields a rise in atmospheric CO<sub>2</sub> concentrations by the year 2300 only a third as large as would be predicted by more realistic models (Figure 8a). DICE underestimates CO<sub>2</sub> in 2300 by over 1000 ppm and warming by nearly 3°C (Figure 8b). To correct this problem, we use a simple carbon cycle model based on Bolin and Eriksson (1959) with nonlinear chemistry as described in Revelle and Suess (1957). The "BEAM" (Bolin and Eriksson Adjusted Model) representation is described and validated in Glotter et al (2013).

## E Endogenous discounting in modified IAWG-DICE

The IAWG protocol specified a fixed discount rate of 3% following OMB guidelines (Circular A-4, which prescribes the required procedures for cost-benefit analysis). However, a requirement of a fixed, exogenous discount rate does not make sense if growth declines substantially or is negative because of harms from climate change. Although there is significant dispute about discounting in climate change policy assessments (see summary in Kaplow et al, 2010), under all formulations, a higher growth rate implies a higher discount rate and a lower growth rate implies a lower one.

The implied interest rate in the standard DICE model is given by the Ramsey equation:

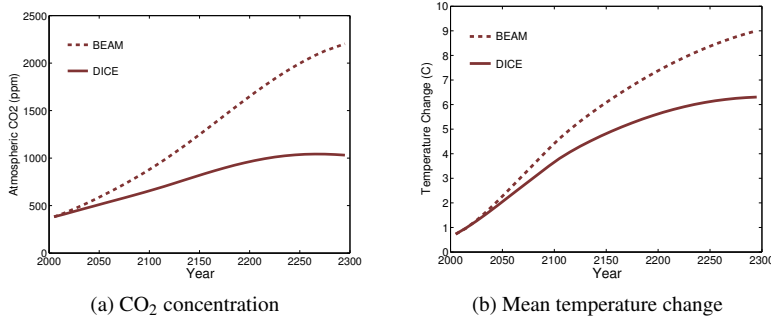


Fig. 8: Carbon dioxide concentration (a) and global mean temperature change (b) using the BEAM (dashed) and DICE (solid) carbon cycle models in interagency DICE-IMAGE. The DICE CO<sub>2</sub> trajectory and resulting projected temperature anomalies vary substantially from those produced with the more physically realistic BEAM. Temperature change in DICE is benchmarked from the pre-industrial, so the year 2000 already experiences  $\sim 0.8^{\circ}\text{C}$  global temperature rise.

$$r_t = \eta \cdot g_t + \rho, \quad (35)$$

where  $\eta$  is the elasticity of the marginal utility of consumption,  $g_t$  is the growth rate in the economy, and  $\rho$  is the pure rate of time preference (i.e., the discount rate applied to utility for purposes of social welfare maximization). Commentators differ widely on how to set  $\eta$  and  $\rho$ , but all agree that a lower growth rate should imply a lower discount rate. A fixed 3% discount rate when growth is low or negative is unlikely to reflect the implied discount rate in DICE for any reasonable choice of  $\eta$  and  $\rho$ . We therefore use equation 35 to compute an endogenous discount rate.

The choice of values for  $\eta$  and  $\rho$  is controversial, and we take no view on the correct values here. We consider two options. The first sets  $\eta = 2$  and  $\rho = 1\%/yr$ , values consistent with many previous studies. (See discussion on p. 21-23 of IAWG (2010); standard DICE (Nordhaus, 2007) uses  $\eta = 2$  and  $\rho = 1.5\%/yr$ .) As an alternative, we consider the lower values used in the Stern Report:  $\eta = 1$  and  $\rho = 0.1\%/yr$  (Stern, 2007). We show the effect of both choices on SCC estimates in Figure 5.

The two discounting parameter choices bracket the OMB-required 3% discount rate when applied to the basecase economic trajectories. Basecase economic growth under DICE damages (Figure 2) involves growth rate slowing from 2.2%-0% in the two centuries from 2000-2300. Resulting discount rates would evolve from 5.4%-1% using the higher  $\eta$  and  $\rho$  values and from 2.3%-0.1% using the lower ones.



## About RDCEP

The Center brings together experts in economics, physical sciences, energy technologies, law, computational mathematics, statistics, and computer science to undertake a series of tightly connected research programs aimed at improving the computational models needed to evaluate climate and energy policies, and to make robust decisions based on outcomes.

RDCEP is funded by a grant from the National Science Foundation (NSF) through the Decision Making Under Uncertainty (DMUU) program.

For more information please  
contact us at  
[info-RDCEP@ci.uchicago.edu](mailto:info-RDCEP@ci.uchicago.edu)  
or visit our website:  
[www.rdcep.org](http://www.rdcep.org)

RDCEP  
Computation Institute  
University of Chicago  
5735 S. Ellis Ave.  
Chicago, IL, 60637 USA  
+1 (773) 834 1726